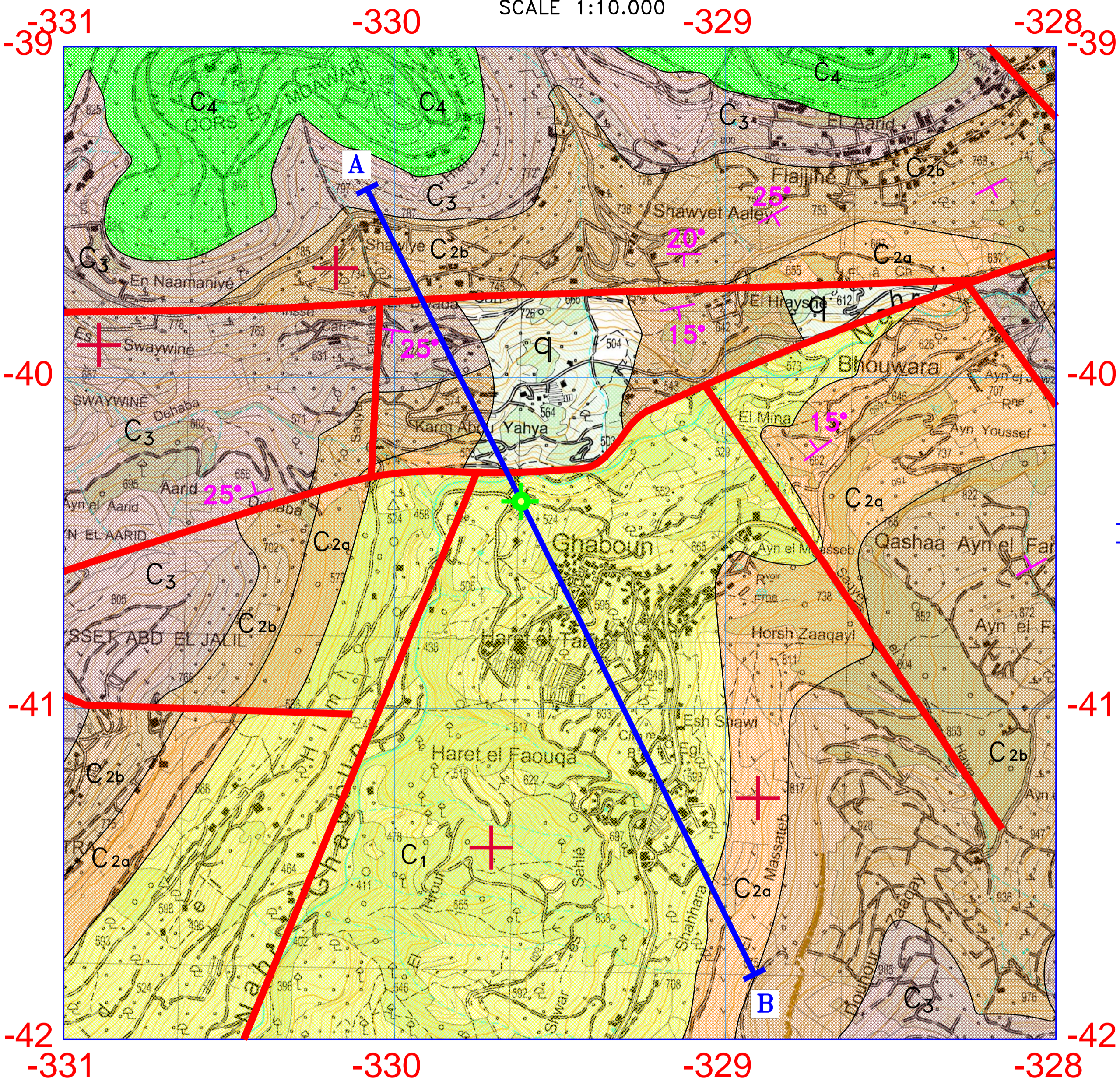


FIG.1 : GEOLOGICAL MAP OF GHABOUN AREA

SCALE 1:10.000

LEGEND:



- ALLUVIUMS AND SLIDES OF THE QUATERNARY (q).
- LIMESTONES, MARLS AND DOLOMITE (INDIFFERENT CENOMANIAN, C<sub>4</sub>).
- GREENISH MARLS (ALBIAN, C<sub>3</sub>).
- REEFAL LIMESTONES (UPPER APTIAN, C<sub>2b</sub>).
- SANDY LIMESTONES AND SANDSTONES (LOWER APTIAN, C<sub>2a</sub>).
- SANDS AND SANDSTONES (NEOCOMIAN, C<sub>1</sub>).
- LIMESTONES AND MARLS (KIMMERIDJIAN, J<sub>6</sub>).
- BASALTS, CINERITS, TUFFS AND BROWN MARLS (OXFORDIAN J<sub>5</sub>).
- LIMESTONES AND DOLOMITIC LIMESTONES OF THE MIDDLE JURASSIC (J<sub>4</sub>).
- FAULT TRACE.
- DIP IN DEGREES.
- MAJOR SPRING.
- PUBLIC WATER WELL.
- PROPOSED WATER WELL.
- HORIZONTALITY DIP.
- LOCATION OF CROSS SECTION (A-B).

SECTION A-B

GEOLOGICAL AND HYDROGEOLOGICAL CROSS SECTION

SCALE 1:10.000

