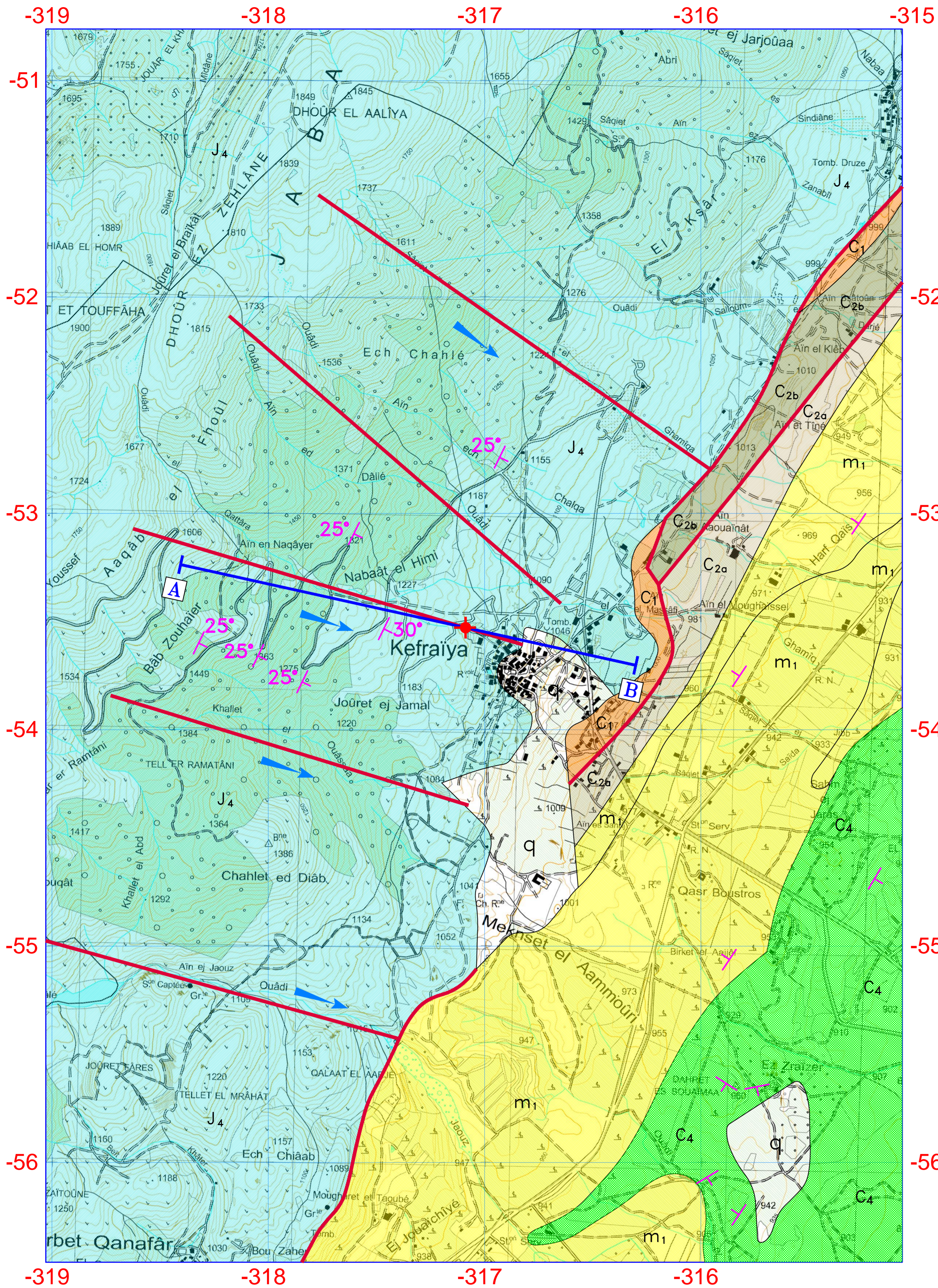


# MAP A: GEOLOGICAL MAP OF KEFRAIYA AREA

SCALE 1:10.000

## LEGEND:



- q ALLUVIUMS AND SLIDES OF THE QUATERNARY (q).
- C<sub>4</sub> LIMESTONES, MARLS AND DOLOMITE (INDIFFERENT CENOMANIAN, C<sub>4</sub>).
- m<sub>1</sub> LACUSTRINE MARLS AND MARLY LIMESTONES (PONTIAN, m<sub>1</sub>).
- C<sub>2b</sub> SHALES, MARLS, SANDSTONES AND GRAY LIMESTONES (UPPER APTIAN, C<sub>2b</sub>).
- C<sub>2a</sub> YELLOWISH LIMESTONES, SANDSTONES, SHALES AND MARLS (LOWER APTIAN-C<sub>2a</sub>).
- C<sub>1</sub> SANDSTONES, SANDS, SHALES, SANDY SHALES AND VOLCANIC MATERIALS (NEOCOMIAN, C<sub>1</sub>).
- J<sub>4</sub> LIMESTONES AND DOLOMITIC LIMESTONES MIDDLE JURASSIC (J<sub>4</sub>).
- FAULT TRACE.
- ∠ <10° DIP IN DEGREES.
- + PROPOSED WELL.
- ← FLOW DIRECTION.
- A B LOCATION OF CROSS SECTION (A-B).



SECTION A-B  
GEOLOGICAL AND HYDROGEOLOGICAL CROSS SECTION  
SCALE 1:10.000

