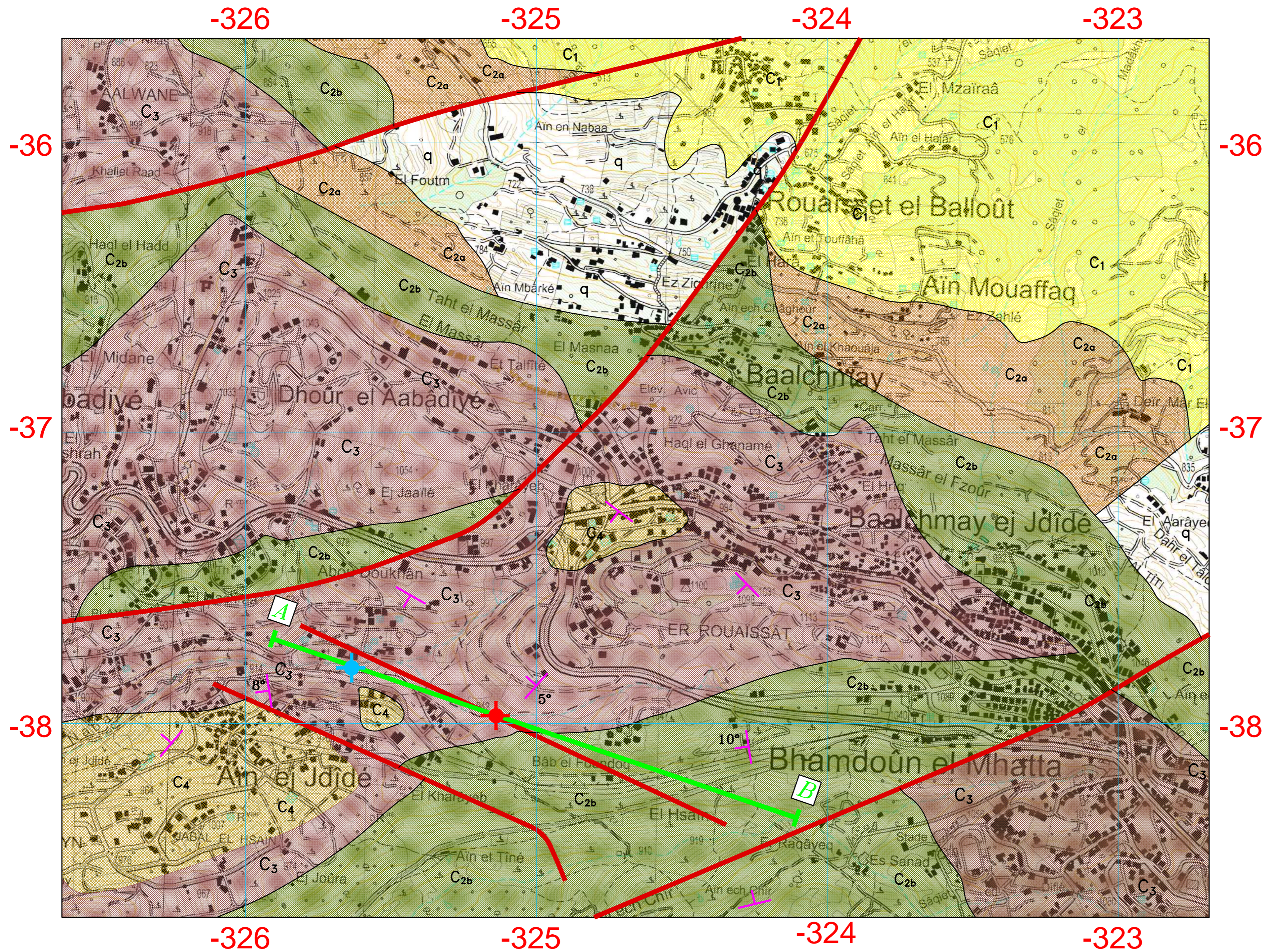


FIG.1 : GEOLOGICAL MAP OF BAALCHMAYE REGION

SCALE 1:10000



LEGEND:

- q DIVERSE FLUVIAL ALLUVIUMS: SANDS, GOBBLES AND CLAYS (RECENT QUATERNARY, q).
- C₄ LIMESTONES AND DOLOMITIC LIMESTONES (CENOMANIAN, C₄).
- C₃ GREEN MARLS (ALBIAN, C₃).
- C_{2b} SHALES, MARLS, SANDSTONES AND GRAY LIMESTONES (UPPER APTIAN, C_{2b}).
- C_{2a} YELLOWISH LIMESTONES, SANDSTONES, SHALES AND MARLS (LOWER APTIAN- C_{2a}).
- C₁ SANDSTONES, SANDS, SHALES, SANDY SHALES AND VOLCANIC MATERIALS (NEOCOMIAN, C₁).
- FAULT.
- 5° LAYERS DIP AND ANGLE OF DIP.
- + EXISTING WELL.
- + PROPOSED WELL.
- GEOLOGICAL CROSS SECTION.



VERTICAL CROSS SECTION OF BAALCHMAY BOREHOLE

SCALE 1:10000

