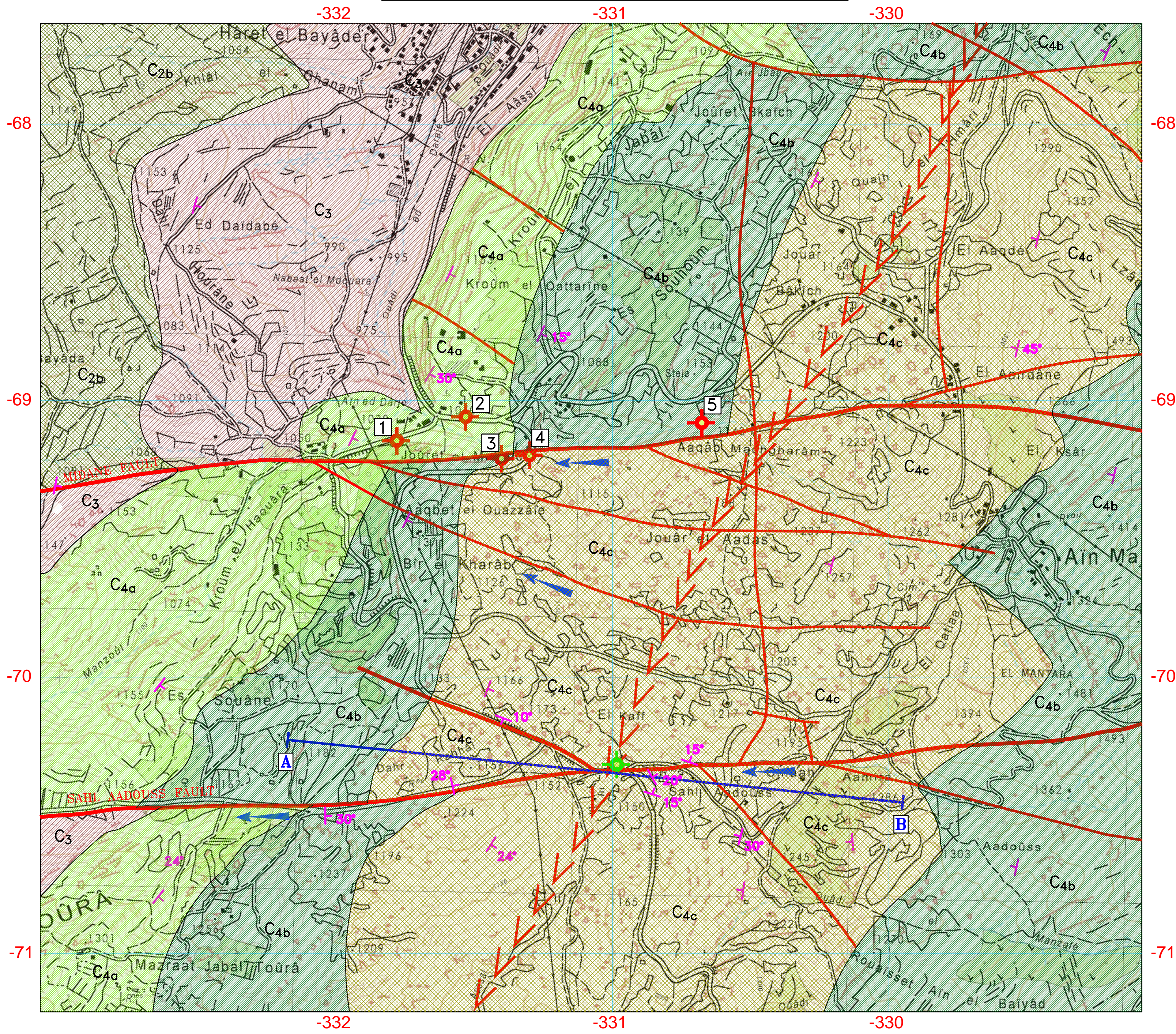
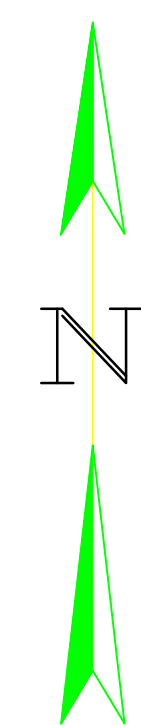


FIG. 1: GEOLOGICAL MAP OF JEZZINE AREA
SCALE 1:10.000



LEGEND:

- C2a** SANDY OOLITIC LIMESTONES (LOWER APTIAN) – SEMI PERMEABLE.
- C2b** REEFIC LIMESTONES (UPPER APTIAN) – PERMEABLE.
- C3** MARLY LIMESTONE AND GREY – GREENISH MARL (ALBIAN) – IMPERMEABLE.
- C4a** DOLOSTONE, DOLOMITIC LIMESTONES AND INTERBEDDINGS OF MARL, DOLOMITE AND LIMESTONE (LOWER CENOMANIAN) – PERMEABLE.
- C4b** INTERBEDDINGS OF MARL AND MARLY LIMESTONE (MIDDLE CENOMANIAN) – SEMI PERMEABLE.
- C4c** LIMESTONES (UPPER CENOMANIAN) – HIGHLY PERMEABLE.
- FAULT.
- JEZZINE'S SYNCLINE AXIS.
- DIP DIRECTION AND VALUE.
- SPRING.
- EXISTING BOREHOLES:
1-JOURET ES SOUQ (BIR EL HAJJAR),
2-JOURET EL MIDANE I (BIR EL HELOU),
3-JOURET EL MIDANE II,
4-JOURET EL MIDANE III,
5-ES SOUHOUM WELL.
- PROPOSED BOREHOLE.
- DIRECTION OF UNDERGROUND WATER FLOW.
- GEOLOGICAL CROSS SECTION (A-B).



VERTICAL CROSS SECTION OF JEZZINE WELL
SCALE 1:10.000

